



## A Day in the Life of a 1<sup>st</sup>/2<sup>nd</sup> Grade Soleado Student

Dear Soleado Community,

We are excited to welcome our 1<sup>st</sup> and 2<sup>nd</sup> Grade Hybrid students back on our campus! Please see the updated weekly schedule and Asynchronous PE Schedule below.

Monday	Tuesday	Wednesday	Thursday	Friday
<b>8:30-10:30</b> Cohort A In person	<b>8:30-11:15</b> Cohort A In person	<b>Online Instruction</b> AM/PM Cohorts <b>8:30- 11:15</b>	<b>8:30-11:15</b> Cohort A In person	<b>8:30-11:15</b> Cohort A In person
<b>10:20-10:30 dismissal</b>	<b>11:05-11:15 dismissal</b>		<b>11:05-11:15 dismissal</b>	
<b>12:15-2:15</b> Cohort B In Person	<b>12:15-3:00</b> Cohort B In Person		<b>12:15-3:00</b> Cohort B In Person	<b>12:15-3:00</b> Cohort B In Person
<b>2:05-2:15 dismissal</b>	<b>2:50-3:00 dismissal</b>		<b>2:50-3:00 dismissal</b>	
<i>*AM Cohort Students will complete assigned Asynchronous work after attending school for in-person instruction. *PM Cohort Students will complete assigned Asynchronous work before attending school for in-person instruction.</i>				

### Asynchronous PE Schedule

PE instruction for **Hybrid students on campus** will move to the Asynchronous part of the day. Doing this ensures that our PE Teachers are in compliance with the current reopening protocols which only allow a teacher who is teaching in-person to be a part of a maximum of two cohorts per day. PE attendance will still be taken, but we will not be assigning PE grades for the second and third trimester. If you have a conflict with the time your child is now scheduled to attend PE, please reach out to Coach Jeff ([wilsonj@pvpusd.net](mailto:wilsonj@pvpusd.net)), as adjustments can be made for your child to participate in PE instruction with other classes/grade levels.

#### **1<sup>st</sup> Grade Hybrid PE Schedule Beginning February 16:**

AM Cohort Students	Thursdays	1:15-2:00
PM Cohort Students	Thursdays	9:30-10:15

#### **2<sup>nd</sup> Grade Hybrid PE Schedule Beginning February 16:**

AM Cohort Students	Thursdays	2:15-3:00
PM Cohort Students	Thursdays	10:30-11:15

## [Asynchronous Music Schedule](#)



Asynchronous Music will continue to be offered until May 27. Please note that Soleado's Asynchronous Music Day is Wednesdays. If this day does not work for your child, please contact the appropriate grade level music teacher to arrange for your child to join on a different day. Click on the link below for more information.

## [2021 Asynchronous Music Schedule](#)

### [Parent & Student Reminders](#)

To accomplish the health and safety measures required by the LADPH in a modified school reopening, we encourage families and students to follow the protocols outlined in this document. We ask for your patience and cooperation as school will look and feel different when on campus this year. We may continue to refine protocols as we learn more about best practices and appreciate your support. It will take all of us working together as a team to make this happen. We appreciate your support in reinforcing these protocols with your children.

### [General Student Information](#)

#### **Student Masks and Lanyards**

All students are expected to wear masks at all times (except when having snack at the designated time). To help staff maintain safety and organization throughout the day, every student will wear a colored mask lanyard (blue for 1<sup>st</sup> grade/neon-yellow for 2<sup>nd</sup> grade). Students are expected to wear their lanyards at school with a clean mask. Please remember to use them daily to prevent loss of masks, or dropping them in dirty areas



#### **Water Bottles**

Students are encouraged to bring labeled refillable water bottles with them to school. If needed, students can use the water bottle refilling stations only. Drinking from the water bottle will happen at snack, or in a designated area where a mask can be removed briefly.

Please keep your children at home if they are experiencing any COVID symptoms. You can complete the Green Screen Survey here: [BCHD Green Screen](#). Any student who exhibits COVID-19 symptoms on campus will be directed to a designated isolation area by the health office, away from other students/staff. Students will remain in this area until a parent/guardian picks them up from school. While school attendance is important, **we do not want to risk endangering others.** Please keep students at home if they have symptoms of any illness.

**Prior to coming to school, families must complete the Green Screen Survey every morning and show us your student's BCHD Green Screen screenshot on your phone, or the Green Screen Card (on the back of your student's name placard) upon arrival.**

# Last Name (PM)

## 1<sup>st</sup> Name (K)

QR CODE for COVID Screening



<https://www.bchd.org/covid/schools>

[illegible]

- **Walkers:** When entering school grounds (including the parking lot) students and adults are expected to wear masks and maintain social distance. Parents will not be permitted past designated signs in the front of campus. Students will walk directly to the designated area to check in with a Soleado staff member. After checking in and showing the Green Screen Survey, the student will be directed to follow the orange and yellow suns to the classrooms. Our yard supervisors, Principal, and other school staff will be assisting and guiding students to their classrooms. Parents are not to go beyond the “walker check-in” point.



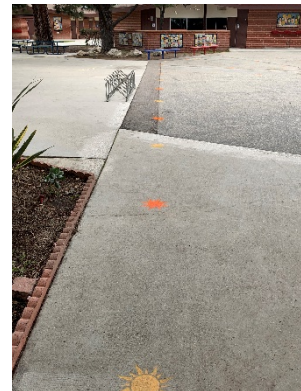
- **Car Riders:** Parents will pull up as far as possible in the drop-off zone (along the curb in the parking lot) and will wait for a signal from staff before allowing students to exit vehicles. Staff will assist one student exiting a vehicle at a time, in order to limit the number of students in the area and ensure that all students arriving at school have completed the Covid Screening. Students will walk directly to the designated area with Yellow and Orange Suns showing the path to the classrooms.

**Parents and Guardians may not exit their cars.**



### **From Car to Classroom:**

Students will follow the guidance of the yard supervisors, Soleado staff, Principal, and teachers when walking to the classroom. Suns are painted from the front of the school to the classrooms to indicate which way students should walk, as well as to help students keep a safe distance from each other.



### **Classroom Time:**

Classrooms have been arranged with desks spaced 6 feet apart and sneeze guards on each desktop. Desks have taped markings for a visual reminder of personal space. All supplies have been purchased so that items are not shared between students. All windows and doors will be open to increase fresh air, so please dress warmly.





### **Outdoor Learning:**

Teachers will have the option of utilizing outdoor space for learning. Popup tents will be set up to cover the picnic tables outside each individual classroom. **Please remember to send your child to school each day with a sweatshirt/jacket.**



### **Break Time**

Prior to leaving for breaks, students will sanitize their hands in the classroom. **Students are encouraged to bring a small snack that can be opened independently.** Students will eat outside with their classroom cohort, sitting in specific spots that allow for social distancing.

While outside, all students must wear a mask and maintain social distancing. Students may remove their masks to eat. Our yard supervisors will monitor the students and encourage social distancing while playing.

Students will have the opportunity to sit in a designated “mask free” zone to take a break from mask wearing in a space that is at a safe distance from others.

Students will line up on the suns at the end of break and wait to be picked up by their teacher. Upon returning to class students will sanitize their hands.

All classes will spend their break time with their own cohort. Each class will have a specific area on the playground to eat their snacks and play.





### **Play Structure Procedures**

All students must wear a face covering and sanitize their hands before entering the play area on days when your child's cohort is using the play structure.

Yard supervisors will monitor the number of students entering the play area.

\*The custodian will disinfect the Play Structure between each cohort use.

### **Restrooms**

Only 1 student will be permitted in the restrooms at a time. Each restroom will have a sign on the restroom door. When using the restroom students use the red magnet as an indicator as to whether the bathroom is in use.





## **Dismissal**

Yard Supervisors, the Principal, teachers and other Soleado staff will escort students to the suns at the front of the school and release students to families in the pickup line at the curb in front of the school. **Families will make sure the name placard is visible on the passenger side of the windshield to let us know the student name.** The student will be walked to the car.

**\*Parents do not get out of the car.**



## **Walkers**

Walkers who are picking students up will wait in the designated “walker” area and show the name placard. The students will be walked to the designated walking area and released.

We kindly ask that, to the extent possible, families keep consistency with pick-up plans. If plans must be changed, please email the teacher so that we are aware of the change in pick-up plans.

## **Inclement Weather**

Staff will adjust to extreme inclement weather conditions in the following manner:

- Recess
  - Will be held inside the cohort classrooms
- Dismissal
  - Students will be dismissed directly from the classroom walking with an adult for guidance. As we are able to lessen crowds we will bring students to the front of the school for dismissal.

## **General Student Expectations**

- All students must wear a face covering at all times while on campus.
- Stay 6 feet apart from others. No hugging or touching is allowed.
- No sharing is allowed and be sure to wash [hands and/or use hand sanitizer frequently](#).
- Other topics staff will review with students: [face coverings](#), [respiratory etiquette](#), and the importance of [social distancing](#).